

MOSAIC ASSOCIATION
OF AUSTRALIA
AND NEW ZEALAND

www.maanz.org Compiled by Kathryn Portelli Sep 2013

START - Flinders St Station 2km+ walk – 1.5hrs

On the far right wall of Flinders St Station, near Clocks Restaurant is **f1 Il Paradiso - 1986** smalti & painted frieze top and bottom. Renovated in 1998 by Mirka Mora & Nicola McGaan

Take pedestrian crossing toward Fed Sq.
On Princes Bridge facing the Yarra River is

f2 Space Invader - 2003 1 of 26 installed in Melbourne on a global mission. Past Deakin Edge, further along Princes Walk is the Art Play building.

At the entrance is the orange curvaceous, mixed media seat

f3 Once Upon A Slime – 2010 features made by children in Art Play mosaic workshops facilitated by Helen Bodycomb.

Continue along the river walk to

f4 Angel - 1998 painted ceramic sculpture. On the Yarra River (since 2002) Previously in the moat outside the National Gallery Victoria in St Kilda Road.

U turn and enter around the RHS of the Art Play building.

At the front of the boulders of Birrarung Mar stands

f5 Futurescape - 2013 inventive future transport methods by Art Play workshop participants, lead by Helen Bodycomb.. Day and night scene boulders.

Directly ahead, on the lawn is

f6 Mali - 2012 made to commemorate the 150th anniversary of the Melbourne Zoo and the birth in 2010 of the first female elephant in Australia. Commissioned by the Lord Mayor's Charitable Foundation for the Children of Melbourne, as part of the play area rejuvenation.

Take the steps up in the parking area to ground level, walking around the left of the roundabout and continue toward the Russell St traffic lights.

Continue up Russell St to the church opposite on Collins St.

f7 Scot's Church - 1963 smalti foyer mural by stained glass designer.

U turn back down Russell St, to the Forum Theatre on the corner of Flinders. Turn right and at the end of the building is Hosier Lane, opposite Fed Square.

On the Forum theatre side wall is the graffiti

f8 Parrot – 2012 made of plastic beads.

Further along Hosier Lane, under the MoVida sign on the LHS is

f9 MoVida - 2003 imported embossed and printed tiles.

Walk up Hosier Lane and turn left into Flinders Lane.

On the RHS, above the Watson Place street sign is

f10 Space Invader – 2003 1 of 26 pixellated graffiti tags Invader hit Melbourne with in his global travels. (Perth was the only other city hit).

Continue down Flinders Lane. On the RHS inside the Brunetti Café, is

f11 Brunetti Cafe – 2005 glass Bisazza pattern Summer Rose

Turn left into Swanston St

In front of the 3rd seat on the pavement edge is

f12 Ladies Only - 1921 ceramic inlay into the kerb

Continue to the front entrance of the Cathedral on the corner

f13 St Paul's Cathedral - 1881 ceramic floors, altars, chapels, reredos by Clayton and Bell, UK

Now you could connect with 1 Arts Flinders, 2 Central Flinders

OR take the free clockwise downhill CITY CIRCLE TRAM on Flinders St

to connect with 3 Docklands Southern Cross

OR take the free anticlockwise uphill CITY CIRCLE TRAM on Flinders St

To connect with 5 St Patrick's Parliament

4 Fed Square Flinders Melbourne, Victoria, Australia



Il Paradiso
f1 Mirka & Nicola

Space Invader
f2 Invader

Once Upon A Slime
f3 Helen Bodycomb

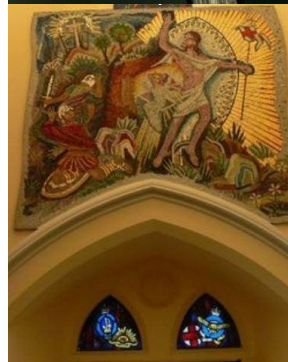
Angel
f4 Deborah Halpern

Futurescape
f5 Helen Bodycomb

Mali
f6 Deborah Halpern



- f1 Flinders St station portico, right hand side end wall, near the Yarra River
- f2 Princes Bridge, St Kilda Road, near the pedestrian steps down to the river
- f3 Outside the front of the Art Play building
- f4 Yarra River edge, Birrarung Mar
- f5 Birrarung Mar, behind the Art Play building, near the boulders
- f6 Birrarung Mar, behind the Art Play building, on the lawn
- f7 Corner Collins St and Russell St, just above the front inner doorway
- f8 Hosier Lane on Forum Theatre side wall
- f9 Entrance in Hosier Lane. Mosaic is just inside the door.
- f10 Corner Watson Place, up high
- f11 Corner Flinders Lane and Swanston St
- f12 Outside Cathedral on Swanston St in front of the seats
- f13 Corner Swanston St and Flinders St



Scot's Church
f7 Alan Sumner



Parrot
f8 Unfigo



MoVida
f9 Imported Spanish



Space Invader
f10 Invader



Brunetti
f11 Bisazza



Ladies Only
f12 Unknown



St Paul's Cathedral
f13 Clayton & Bell UK